

# SmartYard®

## Advanced Depot Management

Clever Devices designs and develops breakthrough solutions for transit systems that are proven to increase efficiency and reduce operation costs while improving the passenger experience.

Walking the yard to manually record parking positions is time consuming and subject to human error. When maintenance staff, depot dispatchers and operators aren't on the same page there can be issues with road-calls, searching for vehicles and late pull-outs. With the **SmartYard®** advanced depot management solution you can locate vehicles anywhere in the depot, schedule vehicle to work assignments, prevent vehicles with known maintenance issues from being assigned to work and run reports on inventory and past performance.

### Eliminate Manual Recording of Parking Positions

Automated depot vehicle location using the Clever Devices real-time vehicle location system provides an up to the minute data on the precise location of every vehicle in your depots, saving time and eliminating the need for manual counting which can be subject to human error and only provides a snapshot.

### Simplified Pull-Out Management

An intuitive, user-friendly display shows the location and health of all vehicles in the yard making vehicle work assignment easier and more efficient. The optional Pull-Out module ensures that the right vehicle is assigned to the right work by using vehicle location, vehicle types, service schedules (blocks) and vehicle health status. It reduces the need to shift vehicles and can be configured to automatically assign vehicles to work.

### Reduce Road Calls

When integrated with AVM® vehicles with known maintenance issues are properly identified to maintenance crews. SmartYard® can prevent these vehicles from being dispatched before required maintenance is completed.

### Improve On-Time Performance

Ensure that your drivers know exactly which vehicle they should take and precisely where it is in the depot, reducing the time needed to search for it and ensuring that drivers board the vehicle and depart the yard on schedule.

### Optimized Pull-In Management

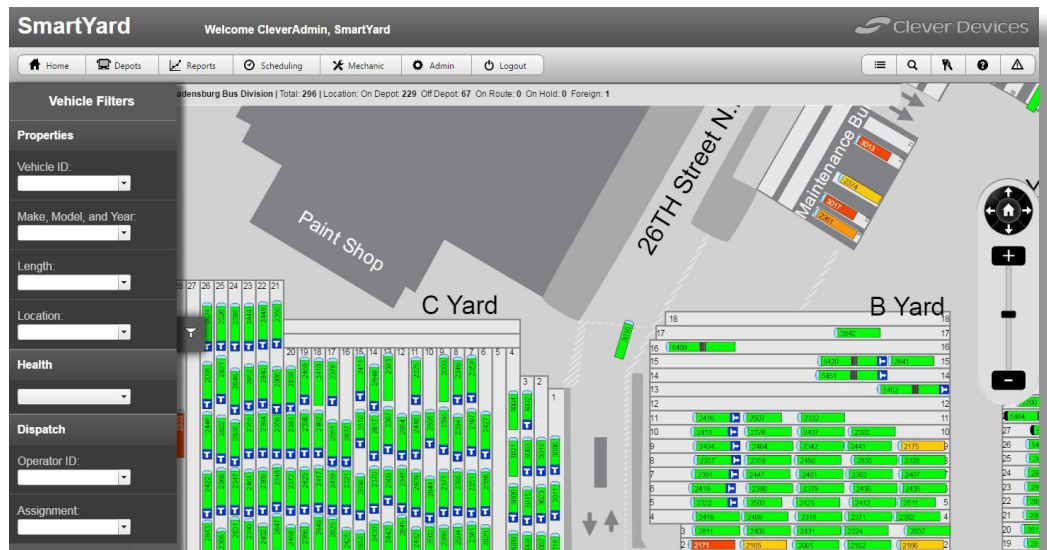
When a vehicle returns to the depot, the optional Pull-In Module tells operators where they should park to optimize vehicle availability for upcoming work. Send vehicles to be fueled, washed, or for needed maintenance to optimize the efficiency of depot operations.



With the SmartYard® advanced depot management solution you can locate vehicles anywhere in the depot, schedule vehicle to work assignments, prevent vehicles with known maintenance issues from being assigned to work and run reports on inventory and past performance.

## Deeper Visibility into Depot Operations

SmartYard® reporting provides Depot Managers with easy-to-use tools that provides the visibility needed to track performance and improve operations. Ensure that your drivers know exactly which vehicle they should take and precisely where it is in the depot, reducing the time needed to search for it and ensuring that drivers board the vehicle and depart the yard on schedule.



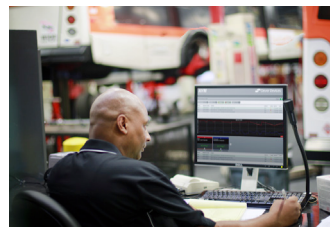
Visit [www.cleverdevices.com](http://www.cleverdevices.com) to learn more about other related products

### IVN® Intelligent Vehicle Network



A smart transit system begins with the Clever Devices Intelligent Vehicle Network (IVN). Our advanced technology provides powerful on-board computing and supports the full range of Clever Devices Intelligent Transportation Systems (ITS) solutions

### AVM® Automatic Vehicle Monitoring



AVM® is an innovative maintenance solution that helps maintenance solve problems before they happen. AVM® continuously measures, monitors, and reports the status of critical systems and components of your fleet, so maintenance issues can be identified and corrected before they become failures.

### CleverCAD® Computer-Aided Dispatch



CleverCAD (Computer-Aided Dispatch) is a sophisticated technology solution that delivers greater efficiency and security to transit operations by providing dispatchers and supervisors with a clear, real-time picture of the location and status of every in-service vehicle.