

CleverWorks™

ITS Data Management Solution

Clever Devices designs and develops breakthrough solutions for transit systems that are proven to increase efficiency and reduce operation costs while improving the passenger experience.

You depend on your ITS technology to keep your operations running efficiently. But, if the data that feeds your systems isn't precise and accurate, your operations can be comprised. With **CleverWorks™** data management solution, the integrity of your data is maximized and modifications are made simple and easy so your ITS systems can run with optimum efficiency.

User Friendly Schedule Data Management

CleverWorks lets you view and easily configure all route variation and pattern data. You can easily manage and modify your schedule, GIS and audio stop announcement data to ensure that your ITS solutions operate with the accuracy and precision they demand. Edit routes and stops without field data collection and configure, edit and validate route paths to ensure the most efficient route geo-path is created without ongoing maintenance costs for map layers.

Simplified Enterprise System Configuration Management

With the click of a button, CleverWorks exports all the data needed for all your Clever Devices solutions. This powerful solution enforces data integrity rules and notifies you of violations related to import rules, editing rules, export rules, and version control. This reduces the likelihood of user-introduced errors providing a clear indication of when the dataset is ready to be exported.

Easy Data Collection with Google Maps

CleverWorks dramatically reduces the level of effort required to collect stop and route data. With support for data tracking via geographic

map rather than time consuming field data collection, you can view and edit routes, stops and timepoints on Google Maps with satellite and hybrid views to ensure the most efficient route geo-path is created.

Faster Audio Deployment with Text-to-Speech

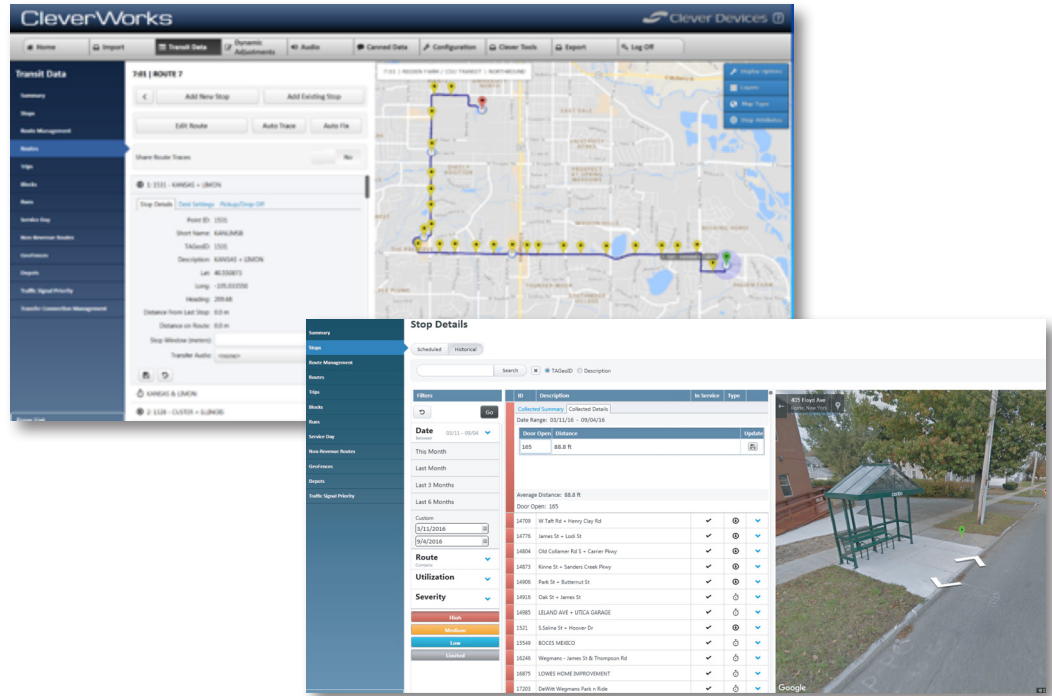
Easily create or update audio announcements using text-to-speech, saving both time and the costs associated with hiring expensive voice talent. Manage all audio and text announcements for AVA including: next stop, route and destination, transfer public service (automated and manual) and location based audio.

Increased Visibility, Accountability & Productivity

More than one user can work in the system at the same time to perform various tasks simultaneously. This allows multiple users to share the work load creating increased efficiencies. The system provides audit user activity logs to provide user accountability and visibility into system configurations.

With CleverWorks™ data management solution, the integrity of your data is maximized and modifications are made simple and easy so your ITS systems can run with optimum efficiency.

Easy to use schedule modifications using Google Maps and a simple point and click interface



CleverWorks enables you to see historical stop details. Also, The Data Integrity Dashboard within CleverWorks provides system administrators with detailed information to quickly identify where errors exist.

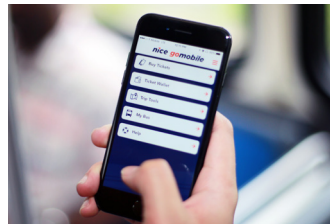
Visit www.cleverdevices.com to learn more about other related products

SmartYard® Advanced Depot Management



Locate vehicles anywhere in the depot, schedule vehicle and maintenance assignments and run performance and inventory reports from an intuitive, user-friendly display that makes vehicle assignment more efficient & ensures the right vehicle is assigned to the right work.

BusTime® Real-Time Passenger Information



Clever Devices' industry leading Real-Time Passenger Information (RTPI) system, BusTime®, is a field-proven solution that allows transit providers to communicate with its passengers. Using GPS technology and schedule/arrival data, BusTime® calculates the arrival time of buses for specific stops and routes.

CleverCAD® Computer-Aided Dispatch



CleverCAD (Computer-Aided Dispatch) is a sophisticated technology solution that delivers greater efficiency and security to transit operations by providing dispatchers and supervisors with a clear, real-time picture of the location and status of every in-service vehicle.